

(3.96 mm) .156"

FHP SERIES

POWER SOCKETS

SPECIFICATIONS

For complete specifications and recommended PCB layouts see www.samtec.com?FHP

Insulator Material: Black LCP

Contact Material: BeCu

Plating: Sn over 50 μ" (1.27 μm) Ni

Operating Temp Range: -55 °C to +105 °C

Voltage Rating: 600 VAC/845 VDC

Insertion Depth: (3.57 mm) .140" to (8.76 mm) .345" or pass-through from top

Wiping Distance: (0.38 mm) .015"

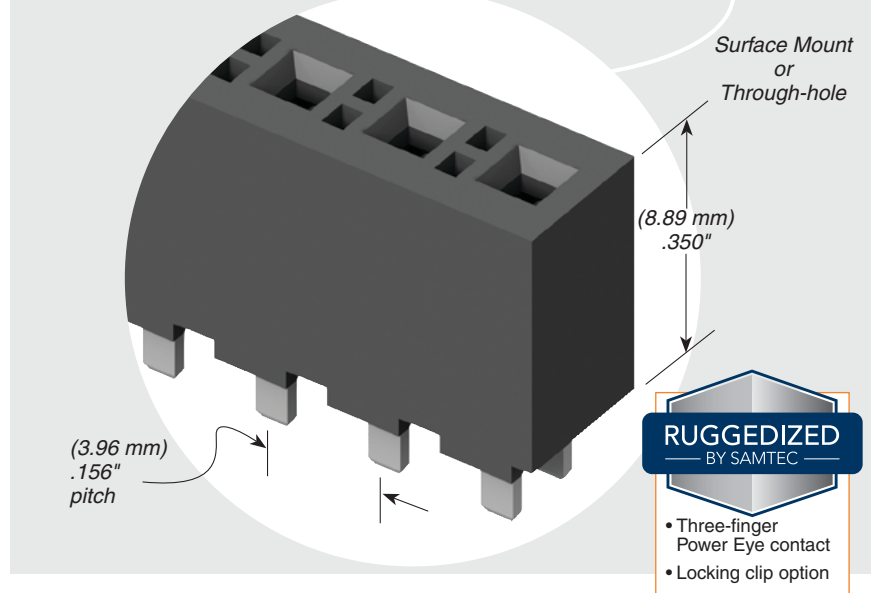
Standard Creepage: (1.74 mm) .069" (without -LC) (0.89 mm) .035" (with -LC)

Standard Clearance: (1.39 mm) .055" (without -LC) (0.59 mm) .023" (with -LC)

RoHS Compliant: Yes

Mates with: FWJ, HFWJ, JW

FHP/HFWJ	
PINS	CURRENT RATING (PER CONTACT)
1	13.1 A
2	11.2 A
3	10.3 A
4	9.2 A
24	6.7 A



RUGGEDIZED BY SAMTEC

- Three-finger Power Eye contact
- Locking clip option

PROCESSING

Lead-Free Solderable: Yes

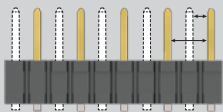
SMT Lead Coplanarity: (0.10 mm) .004" max

RECOGNITIONS

For complete scope of recognitions see www.samtec.com/quality



CREEPAGE AND CLEARANCE

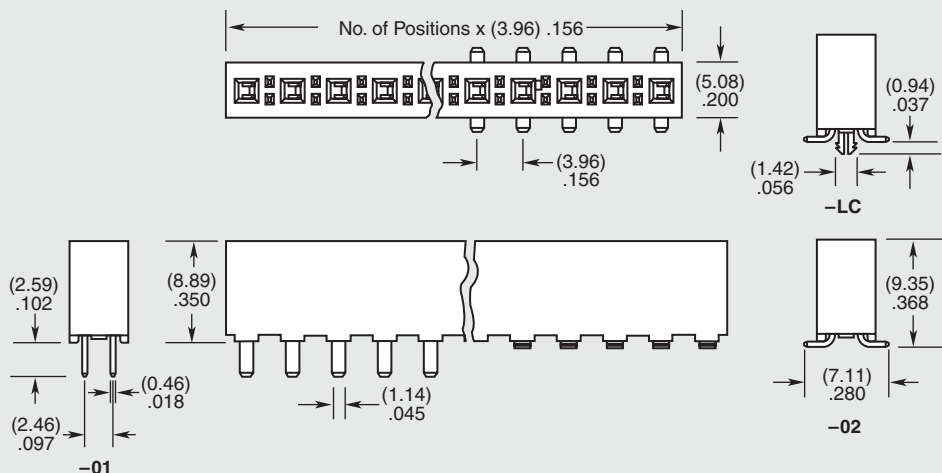
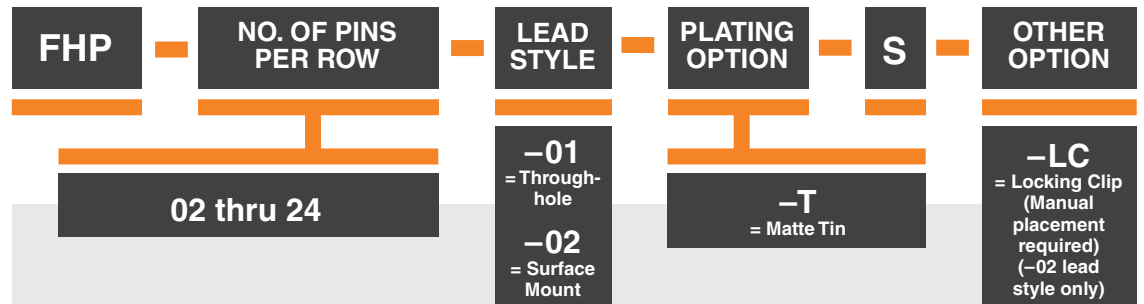


Selectively loading contacts achieves customer specific creepage and clearance requirements. Contact asp@samtec.com

ALSO AVAILABLE (MOQ Required)

- Alignment pins

Note: Some lengths, styles and options are non-standard, non-returnable.



Due to technical progress, all designs, specifications and components are subject to change without notice.

WWW.SAMTEC.COM

All parts within this catalog are built to Samtec's specifications. Customer specific requirements must be approved by Samtec and identified in a Samtec customer-specific drawing to apply.